

**PATHOLOGY  
IN FOCUS  
2021**



NATA  
celebrating  
**75** years  
anniversary



DELIVERING  
CONFIDENCE FOR  
**75** YEARS

The NATA/RCPA pathology  
accreditation celebrating

**40** years  
anniversary



 **RCPA**  
The Royal College of Pathologists of Australasia

# Pathology

## Objectives of NATA/RCPA Accreditation

**1.**

### **IMPROVE**

standards in pathology

**2.**

### **RECOGNISE**

those meeting minimum acceptable standards

**3.**

### **ENCOURAGE**

debate and discussion on appropriate standards

**4.**

### **HEIGHTEN**

awareness of need for appropriate education and training for all staff

**5.**

### **PROGRESSIVELY**

raise standards of laboratory practice and clinical consultation

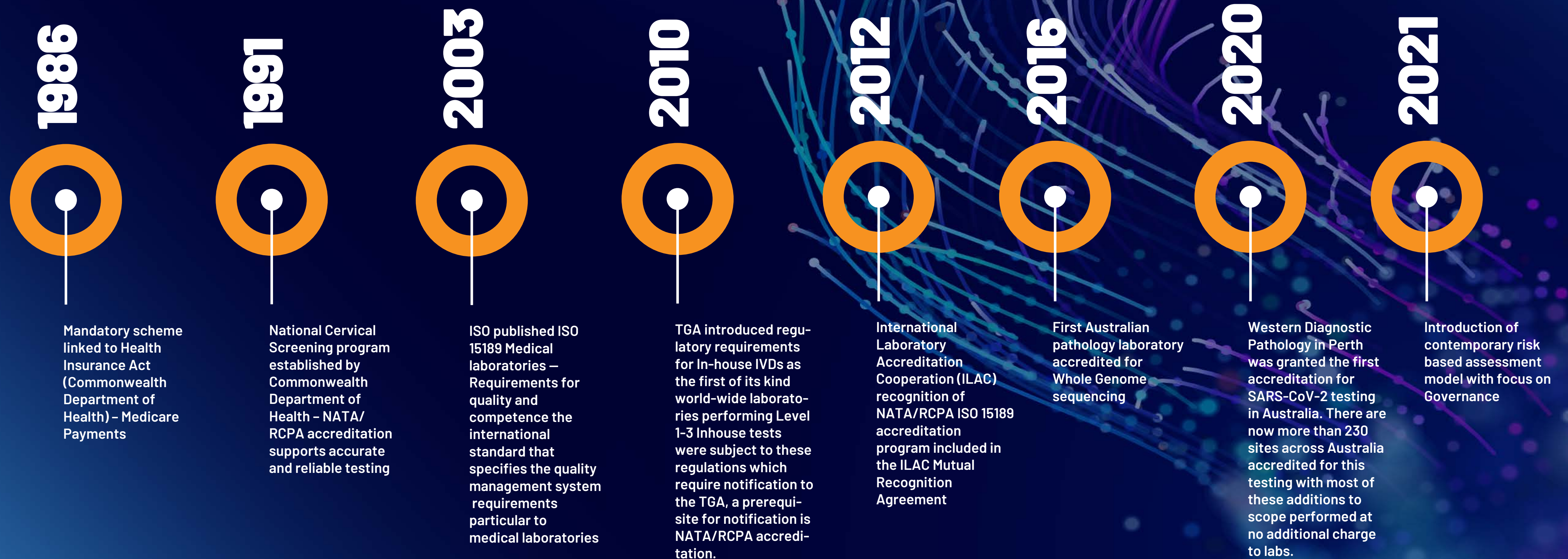
**6.**

### **ENSURE**

that the public is better protected when a poorly performing laboratory is identified whereby prompt action can be taken

# Highlights

## of NATA/RCPA Accreditation Program



# Clinical Governance

Review of the highest level of interaction, cooperation and direction in an organisation.

# 4 Pillars



# Impact of NATA/RCPA Accreditation

## Improved standards demonstrated by:

**1.**

Comparison of  
assessment findings  
since inception  
(1000s of assessments)

**2.**

Dramatic reduction in  
the number of problem  
laboratories

**3.**

Dramatic reduction in  
the number of follow-up  
assessments required

## However,

**1.**

Approximately  
up to 1-3 %  
facilities are still  
identified as  
having poor  
assessment  
outcomes

**2.**

NATA can and  
does suspend  
accreditation  
due to poor  
performance

# PATHOLOGY IN FOCUS

**3** key areas



Industry Metrics



NATA Visit Metrics



Details of Findings/  
Conformances



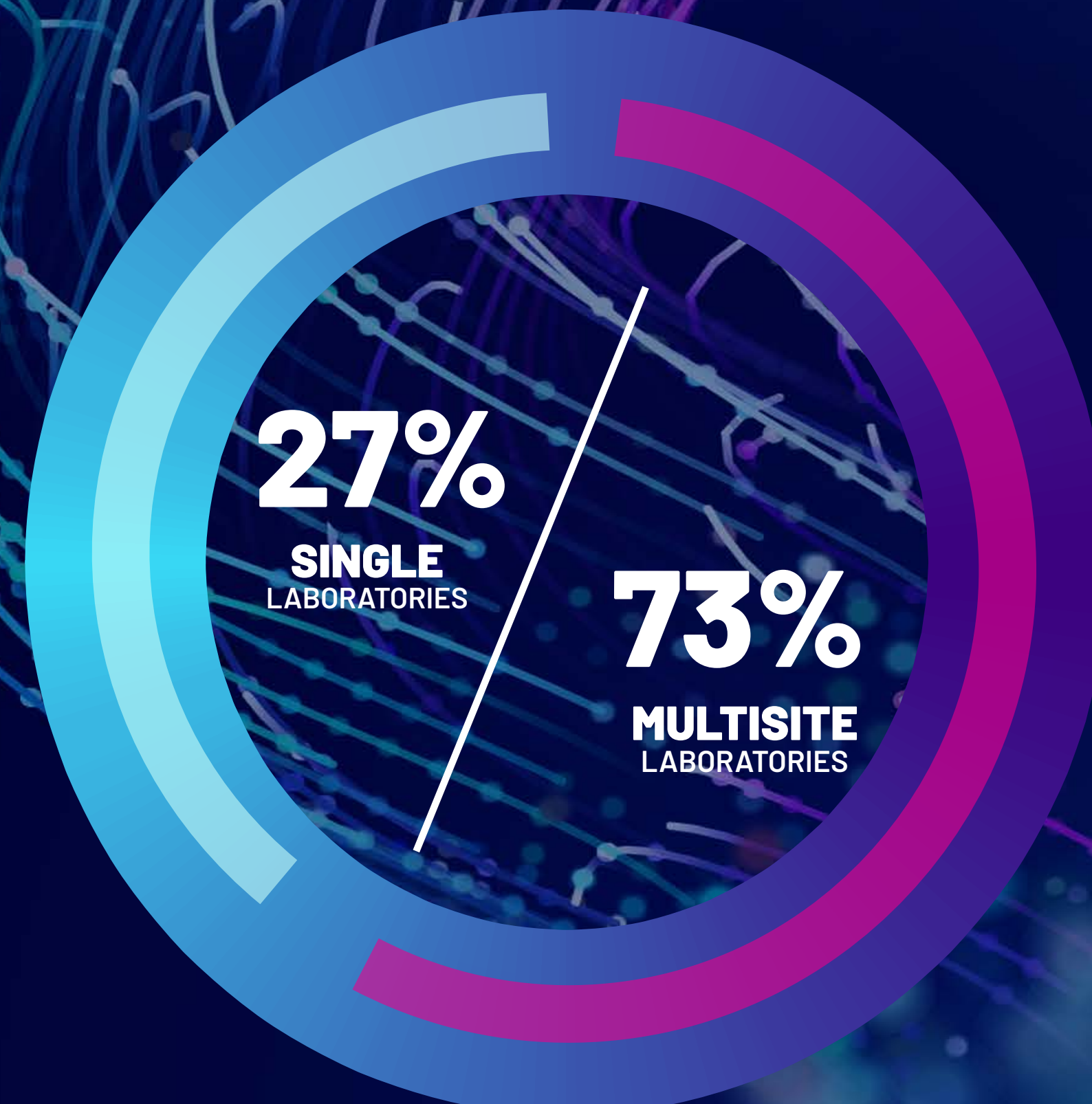
# 1. Industry Metrics

**Includes:**

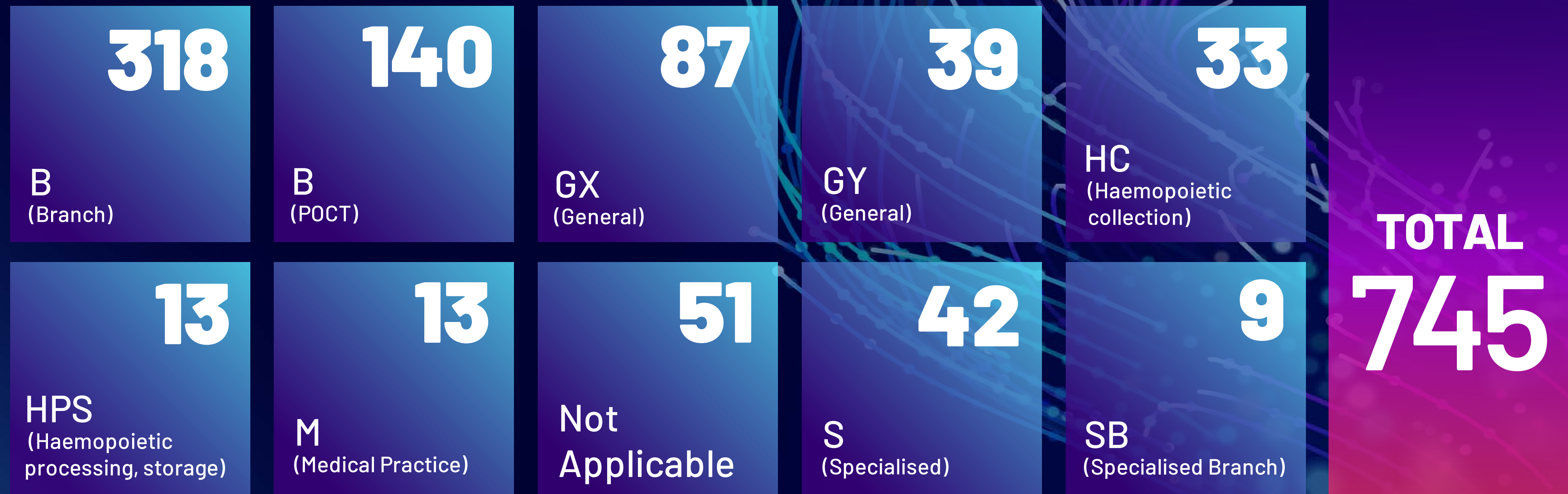
- Number of labs
- Networks
- Category (classification)
- Ownership
- Metro -rural breakdown



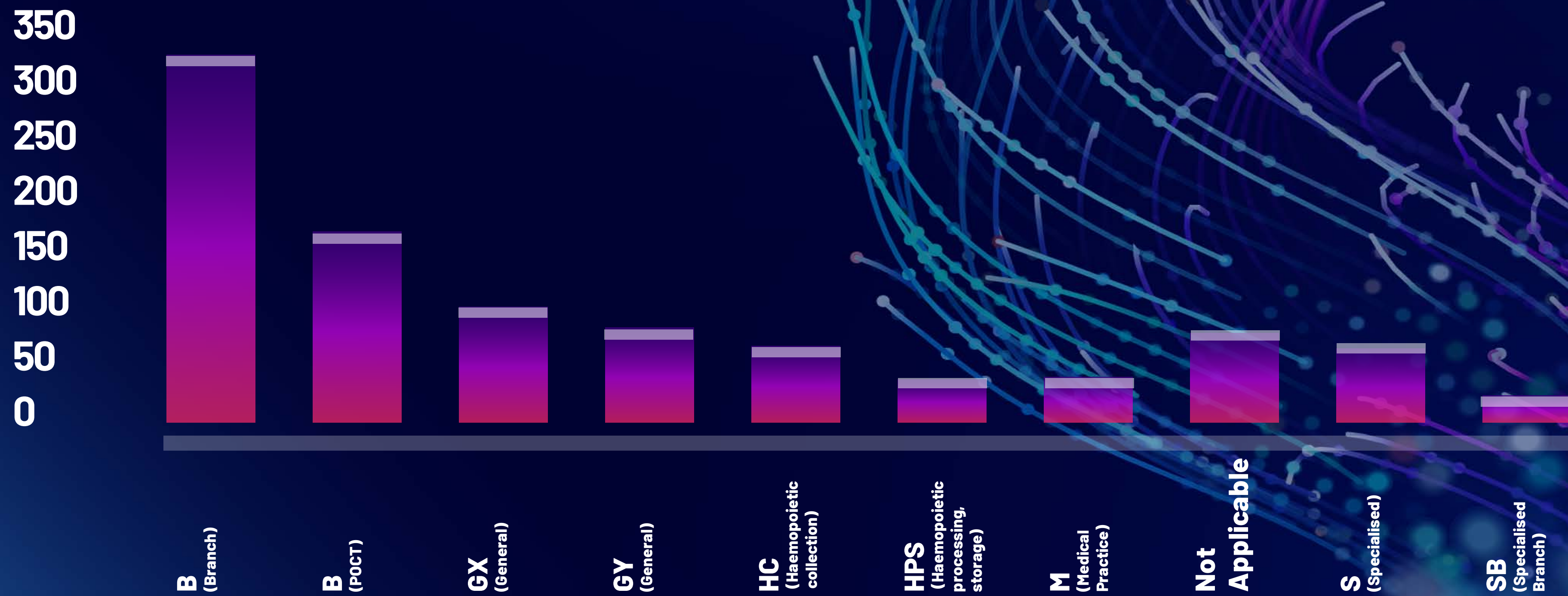
# Human Pathology at a glance



# Numerical Breakdown of Laboratory Categories



# Overview of Laboratory Categories



**41%**

307 Count of NPAAC  
**PUBLIC**

**PUBLIC  
VS  
PRIVATE  
ownership**

**59%**

438 Count of NPAAC  
**PRIVATE**



**64%**

479 Count of NPAAC

**METRO**

**METRO  
VS  
RURAL  
ownership**



**36%**

266 Count of NPAAC

**RURAL**



## 2. Visit Metrics

# Assessment Activities Comparison

	Advisory Visit (ADV)	Partial Technical assessment (ARE)	Initial Assessment (ASS)	Clinical Governance Assessment (CGA)	Follow up Assessment (FAS / FES)	Online Assessment (OLN)	Reassessment (RES)	Surveillance visit (SRV)	Follow up Covid visit (STF)	Variation visit (VAR)	TOTAL
2020	14	17	18	2	3	31	107	177	9	11	389
2021	16	71	25	16	4	0	399	92	87	19	738



In 2021, our army of  
**Technical Assessors**  
are working hard

**829**

**TOTAL NUMBER**  
OF TECHNICAL  
ASSESSORS

**411**

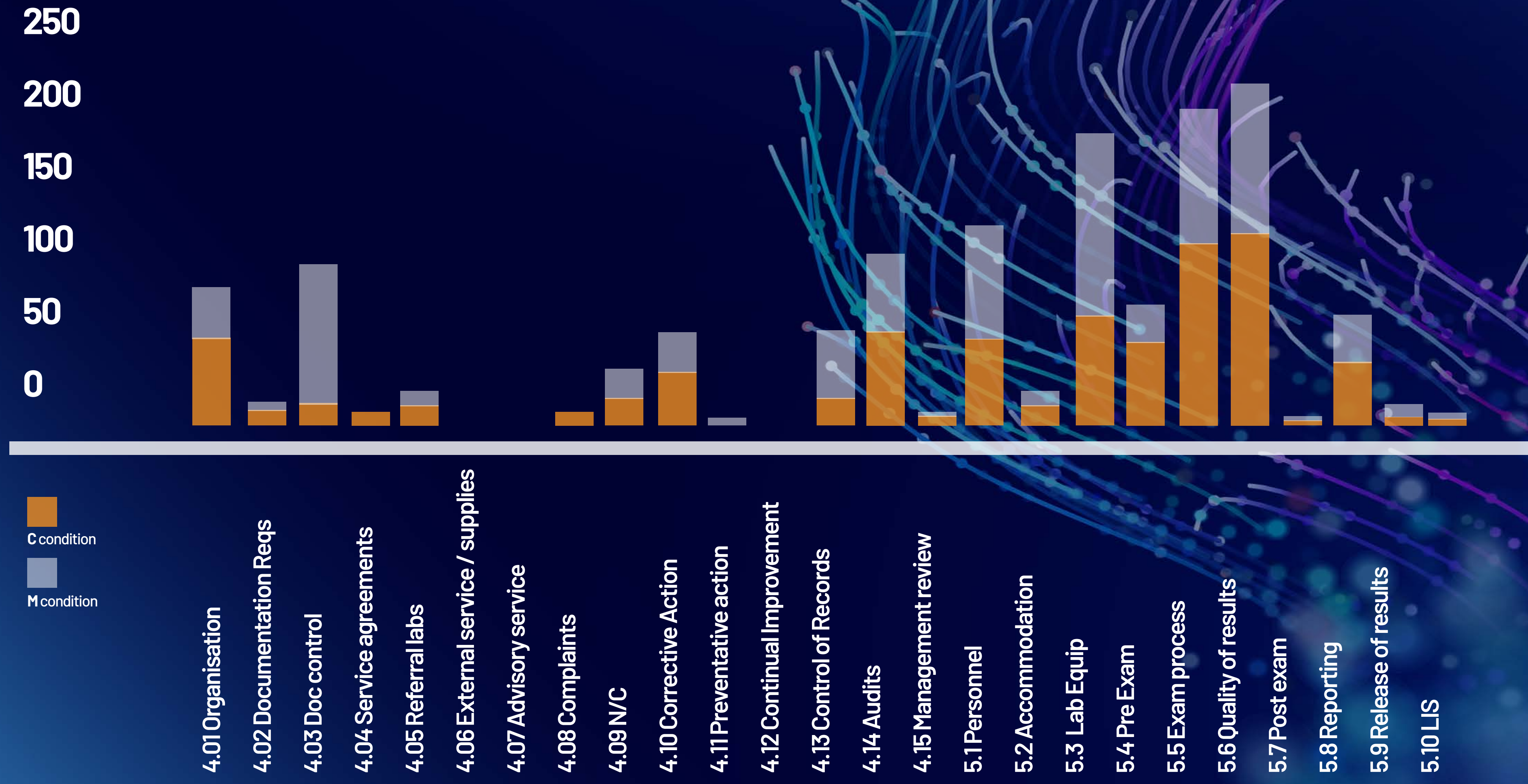
**TECHNICAL  
ASSESSORS**  
used at least once



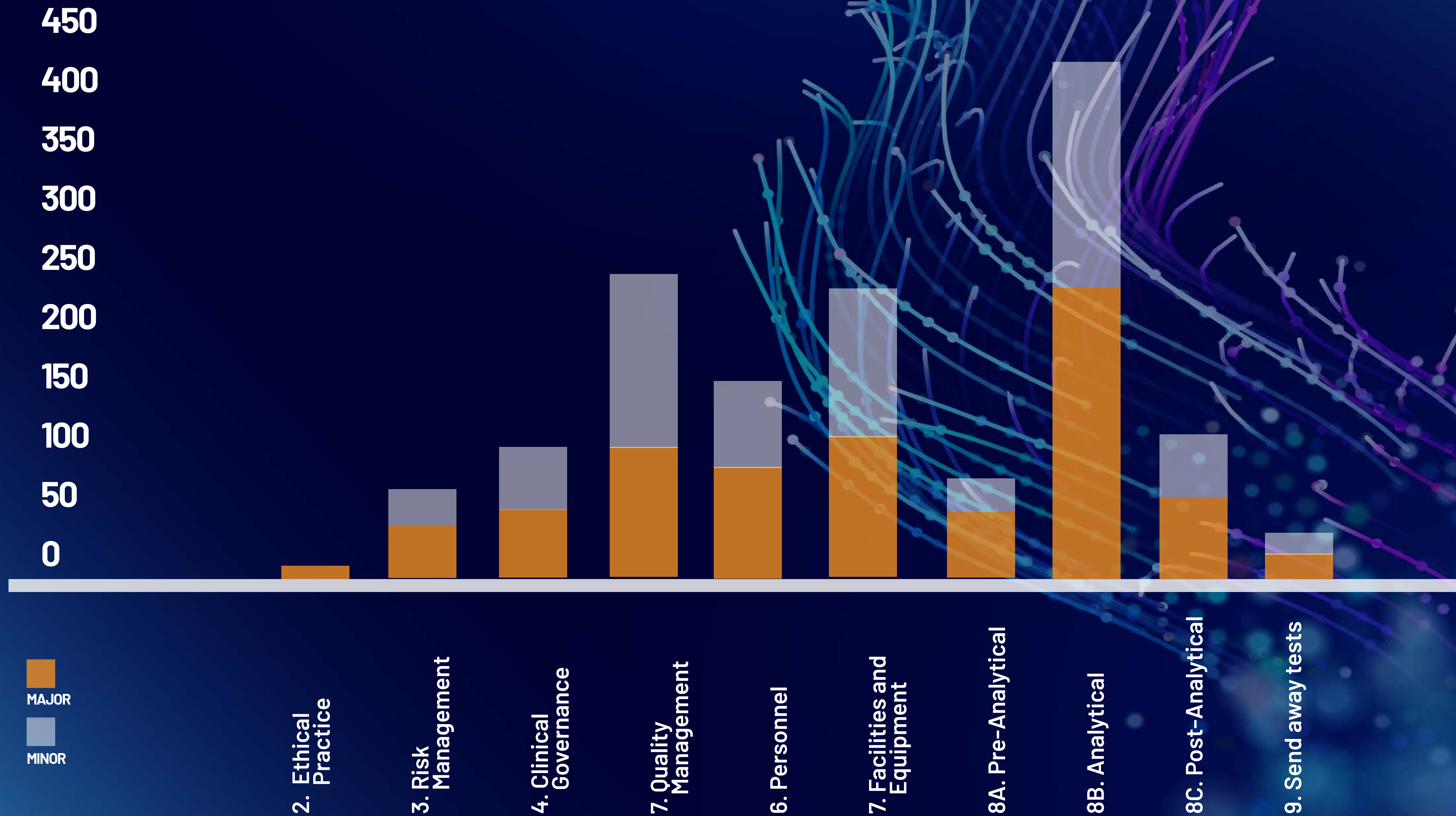


# 3. Details of Findings and Non-conformances

# Non-Conformances against 15189 (2021)



# Non-Conformances against RMPS (2021)



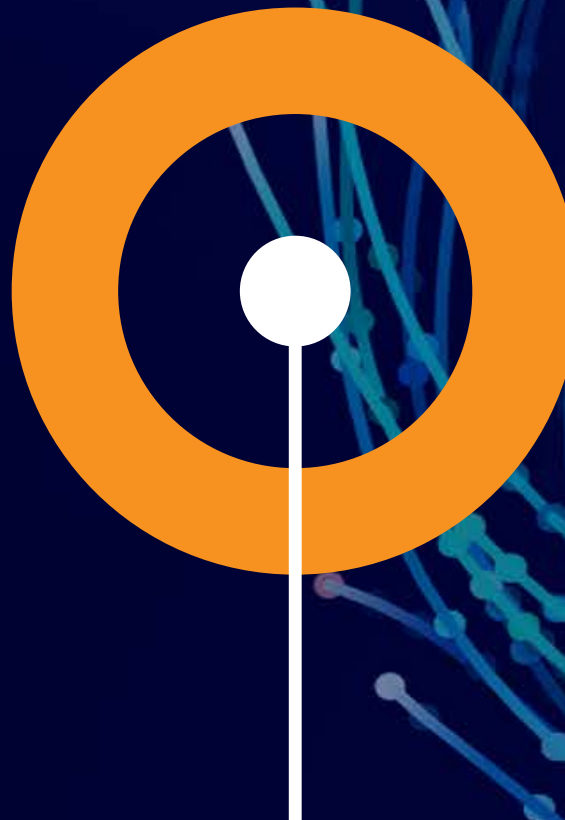
# Areas that attract the highest number of non-conformances



Acceptable  
QC performance



Enrolment &  
participation in  
EQA programs



Staff training  
and competence  
issues



Validated /  
verified procedures  
must be used



Equipment must  
be fit for purpose